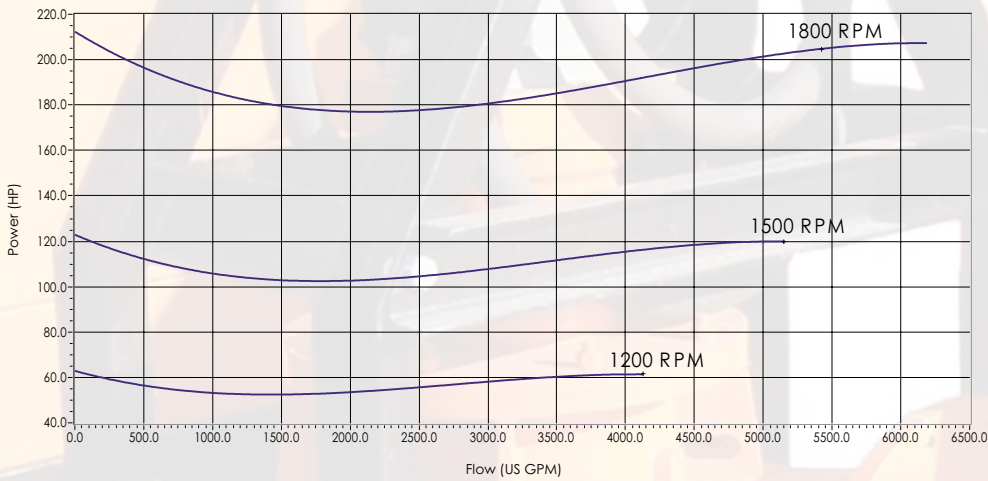
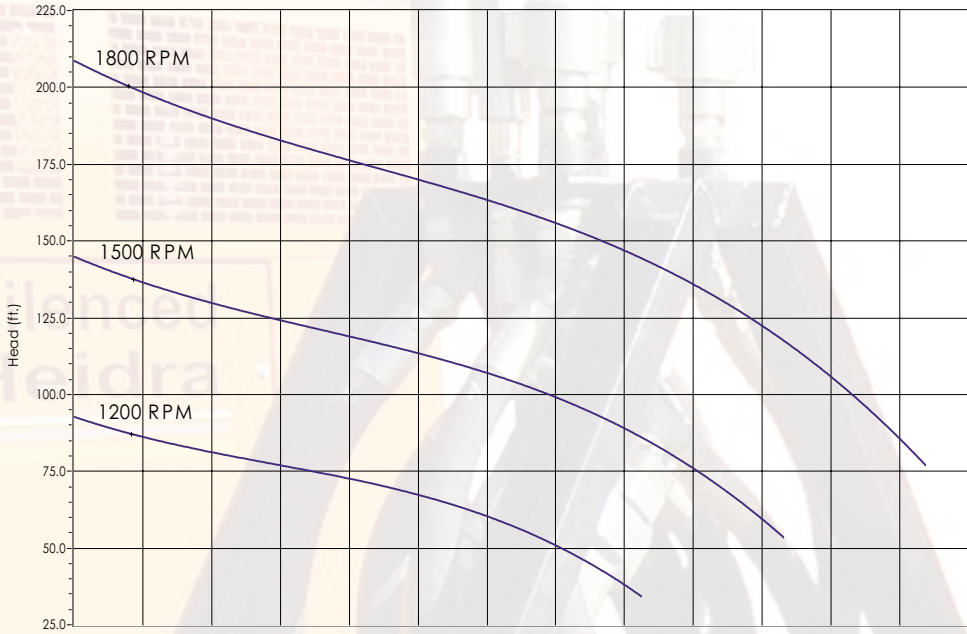


Performance Curve



Notes
 Curves based on pump speed. Performance will depend on hydraulic power unit.
 Published performance is achieved at total suction lift heads up to 15' (4.57 m). When greater, reduce performance.

Performance Table

Diesel Set - JD6068H, 275 HP (205 kW) @ 2000 RPM
 Impeller Diameter: 14.25" (362 mm)

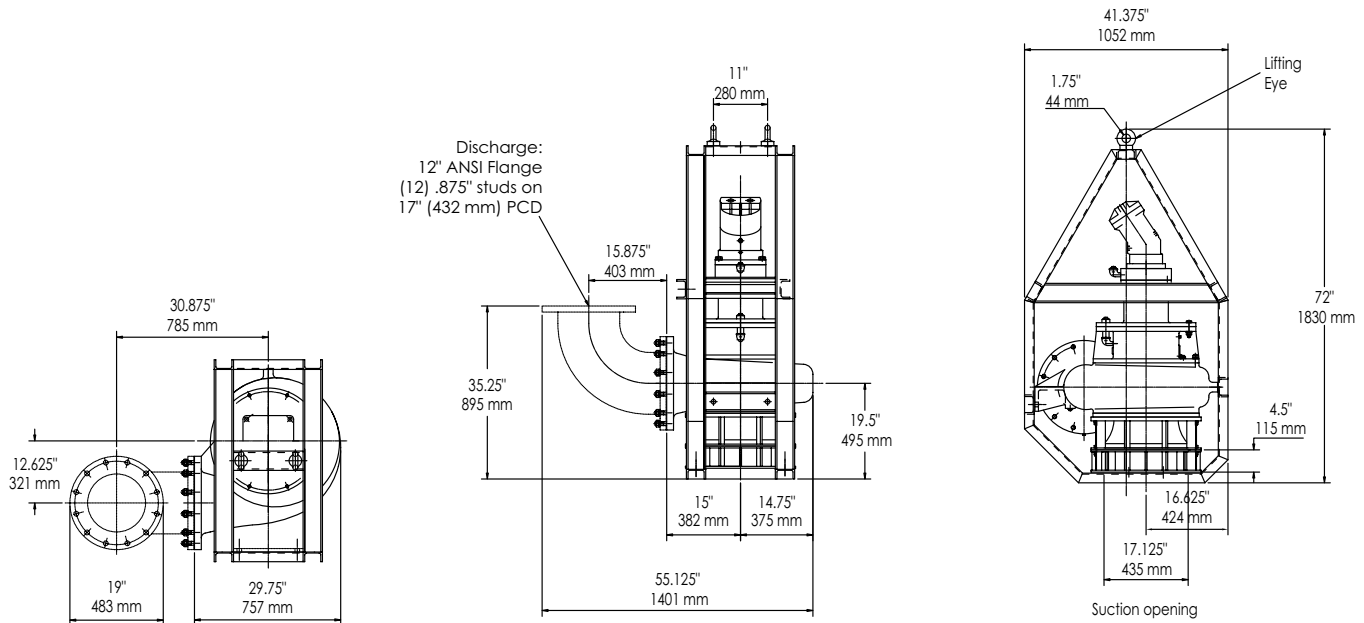
| Output - GPM | | | |
|--------------|------|------|------|
| 40 | 80 | 120 | 160 |
| 6000 | 5810 | 4870 | 3010 |
| 5480 | 5250 | 4700 | 3000 |
| 4850 | 4780 | 4500 | 2900 |

Performance data listed in table and curves based on water test at sea level and 68°F (20°C). Maximum flows may require larger diameter pipes.

Drawings

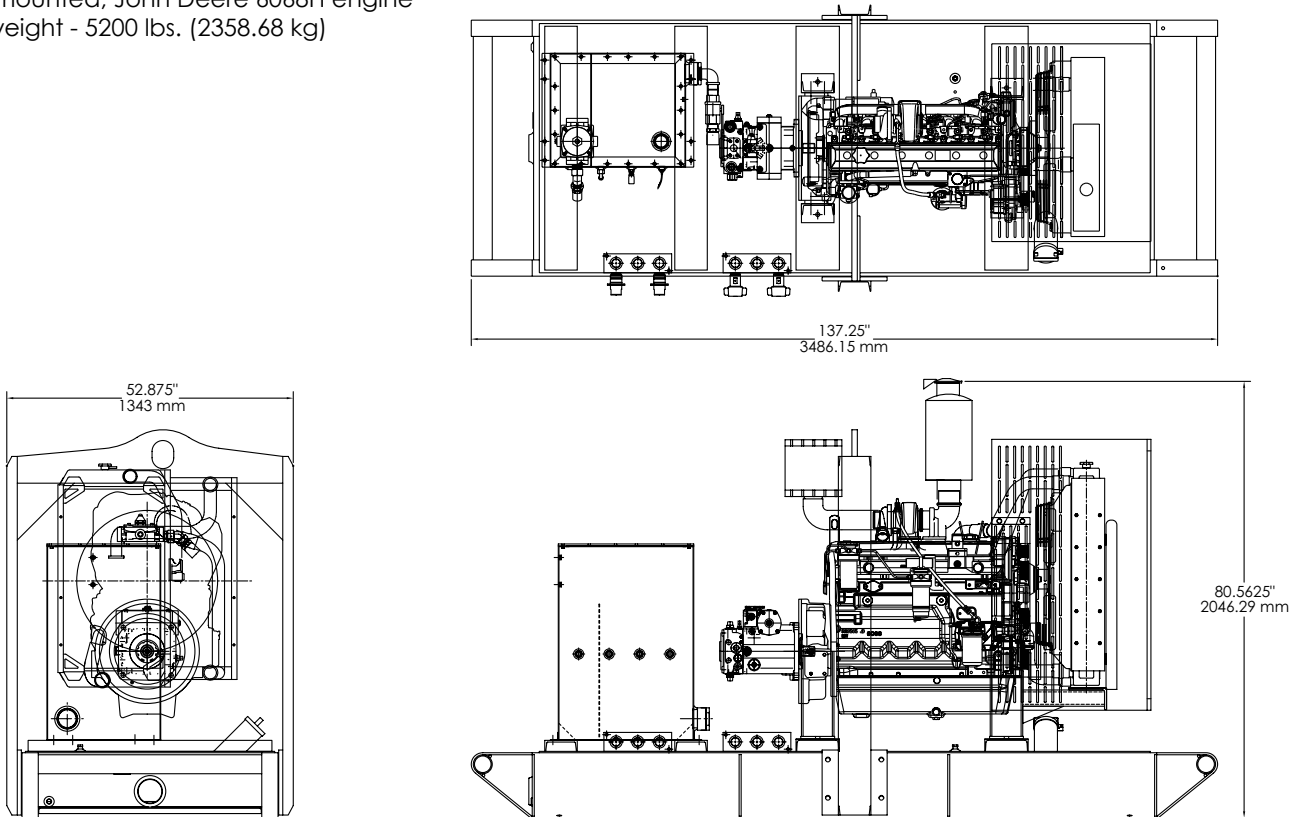
Submersible Pump

Pumpend dry weight - 2075 lbs. (941.2 kg)



Skid-Mounted Power Pack

Skid-mounted, John Deere 6068H engine
Dry weight - 5200 lbs. (2358.68 kg)



Home Office:
Godwin Pumps of America, Inc.
One Floodgate Road
Bridgeport, NJ 08014 USA
(856) 467-3636 • Fax: (856) 467-4841
Email: sales@godwinpumps.com
www.godwinpumps.com

